

Universe Parameters**Definition**

Name:	Enrollment - Registrar only
Description:	Views of student enrollment data. Includes course information since 1995 and is retained for up to 5 years. Updated nightly.
Connection:	DB2 Secured

General information

Created:	8/27/1999 by FSIS69
Modified:	4/30/2002 by FSIS69
Comments:	
Statistics:	35 Classes
	513 Objects
	49 Tables
	10 Aliases
	55 Joins
	0 Contexts
	0 Hierarchies
	26 Conditions

Strategies

Join strategy:	Edit Manually (none)
Table strategy:	(Built-in) Standard
Object strategy:	(Built-in) Standard Renaming

Controls

Limit size of result set to:	500000 rows
Limit size of long text objects to:	1000 characters
Limit execution time to:	10 minutes
Warn if cost estimate exceeds:	unchecked

SQL parameters

Query	
Allow use of subqueries:	yes
Allow use of union, intersect and minus operators:	yes
Allow complex conditions in Query Panel:	yes
Cartesian products:	prevent
Multiple paths	
Generate several SQL statements for each context:	yes
Generate several SQL statements for each measure:	yes
Allow selection of multiple contexts:	no

Links

University Space Management System
Curriculum Master

FSSAS.COURSE_DESCRIPTION	
COURSE_DESCRIPTION	C
COURSE_IND	C
COURSE_NUMBER	C
EFFECTIVE_TERM	C
EFFECTIVE_YEAR	C
LAST_UPDATED	D
LAST_UPDATED_BY	C
SEQUENCE_NUMBER	N

9798

FSSAS.COURSE_SECTIONS	
YEAR	C
TERM	C
COURSE_NUMBER	C
COURSE_IND	C
SECTION_NUMBER	C
COURSE_VARIANT_NUM	N
COURSE_REF_NUMBER	C
COURSE_COHORT_NUM	C
COURSE_COHORT_IND	C
INST_ORIGIN_IND	C
BLACKBOARD_VERSION	C
SECTION_GROUP_CODE	C
SECTION_TITLE	C
COMMUNITY_SERV_HRS	N
FINAL_EXAM_START	D
FINAL_EXAM_END	D
FINAL_EXAM_BLDG	C
FINAL_EXAM_ROOM	C
PRIMARY_INST_MODE	C
SUMMER_SESSION_IND	C
INST_DELIVERY_IND	C
REMOTE_DELIV_ONLY	C
TECH_DELIVERY_IND	C
TECH_DELIVERY_IND2	C
TECH_DELIVERY_IND3	C
GRADE_DELIVERY	C
WEB_PACKAGE	C
LAST_UPDATED	D
LAST_UPDATED_BY	C
FACULTY_ID	C
IAF_REPORTABLE	C
COMMENT	C
NUMBER_ENROLLED	N
COURSE_CAPACITY	N
SEATS_REMAINING	N
COURSE_LOC_CODE	C
COURSE_STATUS	C
MAX_CREDIT	C
MIN_CREDIT	C
SPEC_PGM_CODE	C
GRADE_TYPE	C
LAB_FEE	N
COURSE_TYPE	C
SECTION_DESC	C

74263

FSSAS.CURRICULUM_MASTER	
COURSE_NUMBER	C
COURSE_IND	C
EFFECTIVE_YEAR	C
EFFECTIVE_TERM	C
DISCONTINUED_YEAR	C
DISCONTINUED_TERM	C
ORIG_COURSE_NUMBER	C
ORIG_COURSE_IND	C
CREATED_DATE	D
LAST_REVIEWED	D
LAST_REVIEWED_BY	C
ALIAS_COURSE_TITLE	C
SYLLABUS_TITLE	C
COURSE_TITLE	C
COURSE_LOCATION	C
COURSE_PROGRAM_CAT	C
PRIMARY_DEPT	C
PRIMARY_MAJOR	C
OFFERED_FALL	C
OFFERED_SPRING	C
OFFERED_SUMMER	C
MIN_CLASS	C
MAJORS_ONLY	C
MIN_GPA	N
MIN_CREDIT	C
MAX_CREDIT	C
GRADE_TYPE	C
REPEAT_CODE	C
DIVISION_LEVEL	C
INSTRUCTOR_PERM	C
REPEAT_INST_PERM	C
REPEAT_TOPICS_VARY	C
DEPT_PERM	C
APPROVAL_DATE	D
PRIMARY_INST_MODE	C
SECOND_INST_MODE	C
LAB_FEE	N
COMM_SERVICE_HOURS	N
SPECIAL_PROGRAM	C
REQ_CONDITIONAL	C
ENFORCE_REQUISITES	C
MAX_REPEAT	N
IAF_REPORTABLE	C
LAST_UPDATED	D
LAST_UPDATED_BY	C
FULL_COURSE_TITLE	C
MISC_REQUISITES	C

11105

FSSAS.MEETS_ACADEMIC_REQ	
COURSE_NUMBER	C
COURSE_IND	C
EFFECTIVE_YEAR	C
EFFECTIVE_TERM	C
FUNCTIONAL_ACTVTY	C
ACAD_CATEGORY	C
ACAD_REQUIREMENT	C
ACTIVATION_YEAR	C
ACTIVATION_TERM	C
DISCONTINUED_YEAR	C
DISCONTINUED_TERM	C
LAST_UPDATED	D
LAST_UPDATED_BY	C

0

FSSAS.CURRICULUM_MAJORS	
COURSE_IND	C
COURSE_NUMBER	C
EFFECTIVE_TERM	C
EFFECTIVE_YEAR	C
LAST_UPDATED	D
LAST_UPDATED_BY	C
MAJOR_CODE	C

1984

FSSAS.CURRICULUM_HISTORY	
COURSE_IND	C
COURSE_NUMBER	C
EFFECTIVE_TERM	C
EFFECTIVE_YEAR	C
LAST_UPDATED	D
LAST_UPDATED_BY	C
TERM_TAUGHT	C
TOTAL_CAPACITY	N
TOTAL_ENROLLED	N
TOTAL_MAJ_ENROLLED	N
TOTAL_SECTIONS	N
YEAR_TAUGHT	C

74581

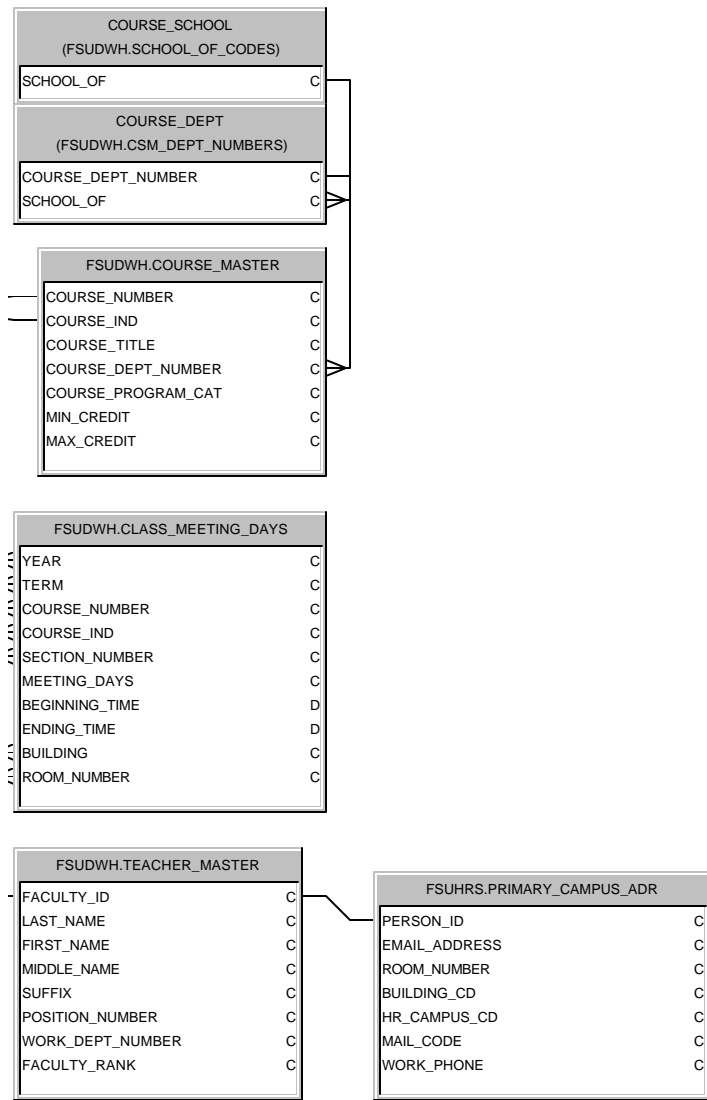
FSSAS.CURRICULUM_DEPTS	
COURSE_DEPT_NUMBER	C
COURSE_IND	C
COURSE_NUMBER	C
EFFECTIVE_TERM	C
EFFECTIVE_YEAR	C
LAST_UPDATED	D
LAST_UPDATED_BY	C

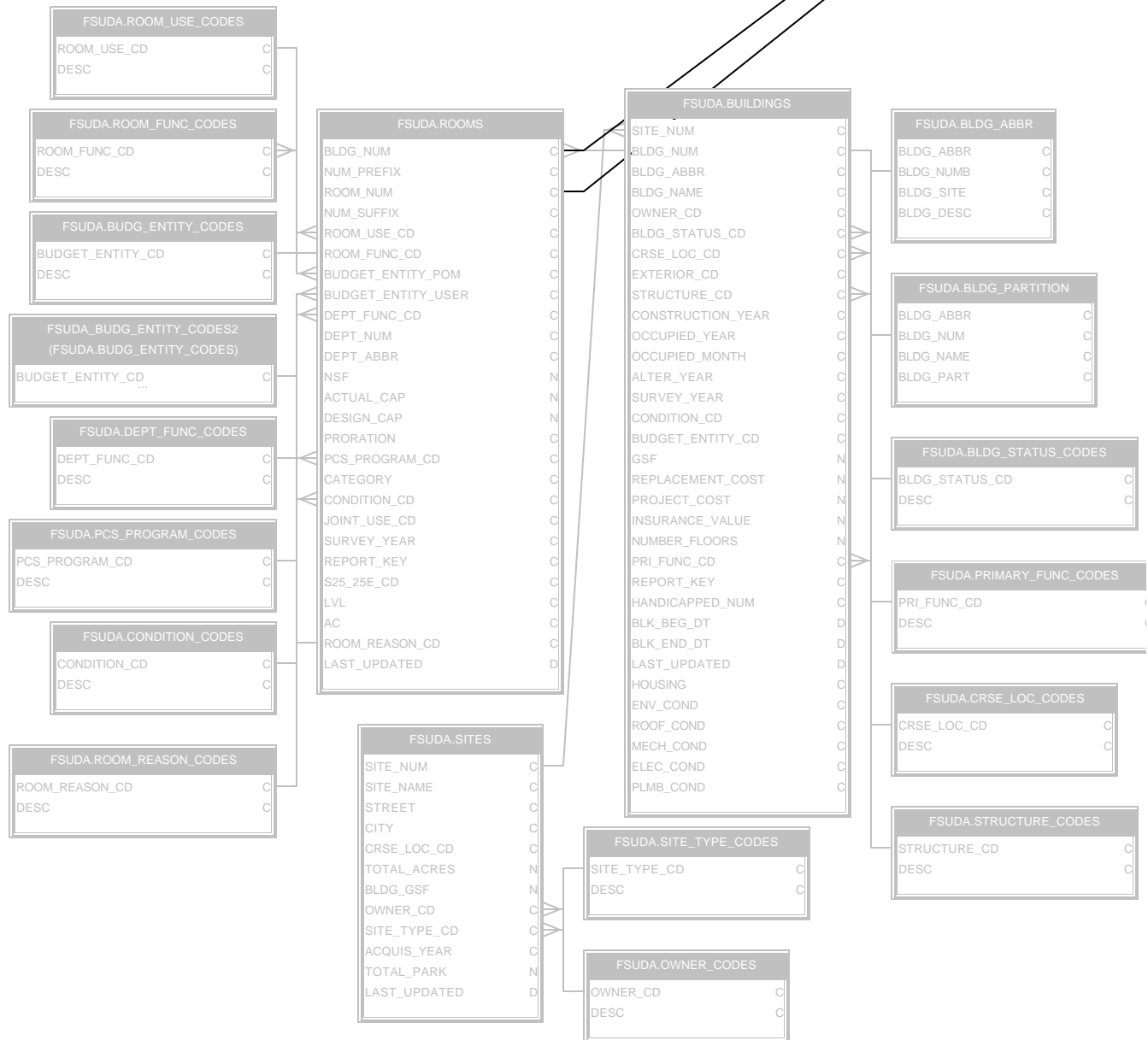
203

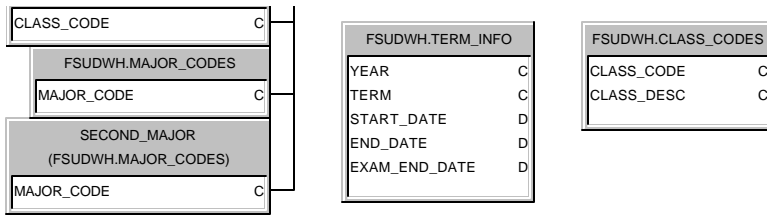
FSSAS.REQUISITE	
COURSE_NUMBER	C
COURSE_IND	C
EFFECTIVE_YEAR	C
EFFECTIVE_TERM	C
DISCONTINUED_YEAR	C
DISCONTINUED_TERM	C
REQUISITE_CRSE_NUM	C
REQUISITE_CRSE_IND	C
ACTIVATION_YEAR	C
ACTIVATION_TERM	C
REQUISITE_TYPE	C
REQUISITE_REQUIRED	C
MIN_GRADE	C
LAST_UPDATED	D
LAST_UPDATED_BY	C

407









00

