

Universe Parameters**Definition**

Name: Admissions
 Description: Admissions database FSADMIDB
 FSSAS & FSSAS2 tables
 10-3-01, new version finished
 Connection: DB2 Secured

General information

Created: 8/29/2000 by FSIS69
 Modified: 2/27/2002 by FSIS69
 Comments:
 Statistics: 32 Classes
 541 Objects
 37 Tables
 4 Aliases
 42 Joins
 0 Contexts
 0 Hierarchies
 2 Conditions

Strategies

Join strategy: Edit Manually (none)
 Table strategy: (Built-in) Standard
 Object strategy: (Built-in) Standard Renaming

Controls

Limit size of result set to: 250000 rows
 Limit size of long text objects to: 1000 characters
 Limit execution time to: 10 minutes
 Warn if cost estimate exceeds: unchecked

SQL parameters

Query
 Allow use of subqueries: yes
 Allow use of union, intersect and minus operators: yes
 Allow complex conditions in Query Panel: yes
 Cartesian products: prevent
 Multiple paths
 Generate several SQL statements for each context: yes
 Generate several SQL statements for each measure: yes
 Allow selection of multiple contexts: no

Links

Academic Test Scores

Join List

Join0: FSSAS.INST_ATTENDED.DEGREE=FSSAS.DEGREE_HIERARCHY.DEGREE
 Join1: FSSAS.PROCESS_STATUS.PROCESS_STATUS_CD=FSSAS.PROCESS_STAT_CODES.PROCESS_S
 TATUS_CD

Join2: FSSAS.VALID_TEST_CODES.SUBJECT_TEST_CD=FSSAS.SUBJECT_TEST_CODES.SUBJECT_TEST_CD

Join3: FSSAS.VALID_TEST_CODES.TEST_TYPE_CD=FSSAS.TEST_TYPE_CODES.TEST_TYPE_CD

Join4: FSSAS.DEGREE_PROGRAM.STUDENT_ID=FSSAS.ADMISSIONS_MASTER.STUDENT_ID

Join5: FSSAS.MISC_LETTERS.STUDENT_ID=FSSAS.ADMISSIONS_MASTER.STUDENT_ID

Join6: FSSAS.FAMILY_ALUMNI.STUDENT_ID=FSSAS.ADMISSIONS_MASTER.STUDENT_ID

Join7: FSSAS.STUDENT_VISA.STUDENT_ID=FSSAS.ADMISSIONS_MASTER.STUDENT_ID

Join8: FSSAS.APPLICATION_ERRORS.STUDENT_ID=FSSAS.ADMISSIONS_MASTER.STUDENT_ID

Join9: FSSAS.ADMISSIONS_MASTER.STUDENT_ID=FSSAS.MISC_INFO.STUDENT_ID

Join10: FSSAS.MISC_INFO.MISC_INFO_CODE=FSSAS.MISC_INFO_CODES.MISC_INFO_CODE and FSSAS.MISC_INFO.MISC_INFO_TYPE=FSSAS.MISC_INFO_CODES.MISC_INFO_TYPE

Join11: FSSAS.ADMISSIONS_MASTER.STUDENT_ID=FSSAS.INST_ATTENDED.STUDENT_ID

Join12: FSSAS.ADMISSIONS_MASTER.STUDENT_ID=FSSAS.SELF_TEST_DATES.STUDENT_ID

Join13: FSSAS.ADMISSIONS_MASTER.STUDENT_ID=FSSAS.OCCUPATIONS.STUDENT_ID

Join14: FSSAS.ADMISSIONS_MASTER.STUDENT_ID=FSSAS.SELF_COLLEGE_CRSES.STUDENT_ID

Join15: FSSAS.ADMISSIONS_MASTER.STUDENT_ID=FSSAS.SELF_HSCHL_CRSES.STUDENT_ID

Join16: FSSAS.DEGREE_PROGRAM.DEG_WORKING_TOWARD=FSSAS.DEGREE_FACULTY.DEG_WORKING_TOWARD and FSSAS.DEGREE_PROGRAM.MAJOR=FSSAS.DEGREE_FACULTY.MAJOR and FSSAS.DEGREE_PROGRAM.MATRICULATION_CAT=FSSAS.DEGREE_FACULTY.MATRICULATION_CAT and FSSAS.DEGREE_PROGRAM.MATRICULATION_TERM=FSSAS.DEGREE_FACULTY.MATRICULATION_TERM and FSSAS.DEGREE_PROGRAM.MATRICULATION_YEAR=FSSAS.DEGREE_FACULTY.MATRICULATION_YEAR and FSSAS.DEGREE_PROGRAM.STUDENT_ID=FSSAS.DEGREE_FACULTY.STUDENT_ID

Join17: FSSAS.ADMISSIONS_MASTER.STUDENT_ID=FSSAS.PROCESS_STATUS.STUDENT_ID

Join18: FSSAS.DEGREE_PROGRAM.MATRICULATION_TERM=FSDWH.TERM_CODES.FSU_TERM_ID

Join19: FSSAS.DEGREE_PROGRAM.STUDENT_ID=FSDWH.DATA_SHARE.SSN

Join20: FSSAS.DEGREE_PROGRAM.DEG_WORKING_TOWARD=DP_DEGREE_CODES.DEGREE

Join21: FSSAS.DEGREE_PROGRAM.DIVISION=FSDWH.SCHOOL_OF_CODES.SCHOOL_OF

Join22: FSSAS.DEGREE_PROGRAM.FSU_CLASS=FSDWH.CLASS_CODES.CLASS_CODE

Join23: FSSAS.DEGREE_PROGRAM.LOCATION_CODE=FSDWH.COURSE_LOC_CODES.COURSE_LOC_CODE

Join24: FSSAS.DEGREE_PROGRAM.MATRICULATION_TYPE=FSDWH.MATRICULATION_TYPE.MATRICULATION_TYPE

Join25: FSSAS.ADMISSIONS_MASTER.STUDENT_ID=FSDBA.CONTACT_MASTER.PERSON_ID AND FSDBA.CONTACT_MASTER.ADDRESS_TYPE = 'F'

Join26: FSDBA.ADDRESSES.PERSON_ID=FSDBA.CONTACT_MASTER.PERSON_ID and FSDBA.ADDRESSES.SEQUENCE_NUMBER=FSDBA.CONTACT_MASTER.SEQUENCE_NUMBER

Join27: FSSAS.ACAD_TEST_SCORES.TEST_TYPE_CD=FSSAS.VALID_TEST_CODES.TEST_TYPE_CD and FSSAS.ACAD_TEST_SCORES.SUBJECT_TEST_CD=FSSAS.VALID_TEST_CODES.SUBJECT_TEST_CD (Academic Test Scores)

Join28: FSSAS.SUBJECT_TEST_CODES.SUBJECT_TEST_CD=FSSAS.VALID_TEST_CODES.SUBJECT_TEST_CD (Academic Test Scores)

Join29: FSSAS.VALID_TEST_CODES.TEST_TYPE_CD=FSSAS.TEST_TYPE_CODES.TEST_TYPE_CD (Academic Test Scores)

Join30: FSSAS.MCAT_WRITING_SCORE.STUDENT_ID=FSSAS.ACAD_TEST_SCORES.STUDENT_ID and FSSAS.MCAT_WRITING_SCORE.TEST_DATE=FSSAS.ACAD_TEST_SCORES.TEST_DATE (Academic Test Scores)

Join31: FSSAS.TEST_EXEMPT.TEST_TYPE_CD=FSSAS.ACAD_TEST_SCORES.TEST_TYPE_CD and FSSAS.TEST_EXEMPT.SUBJECT_TEST_CD=FSSAS.ACAD_TEST_SCORES.SUBJECT_TEST_CD (Academic Test Scores)

Join32: FSSAS.ACAD_TEST_SCORES.STUDENT_ID=FSSAS.ADMISSIONS_MASTER.STUDENT_ID

Join33: FSSAS.ADMISSIONS_MASTER.STUDENT_ID=FSSAS.SESSION_IDS.STUDENT_ID

Join34: FSSAS.FAM_INCOME_RANGES.FAM_INCOME_RANGE=FSSAS.ADMISSIONS_MASTER.FAM_INCOME_RANGE

Join35: FSSAS.SELF_TEST_DATES.SUBJECT_TEST_CD=SELF_VALID.SUBJECT_TEST_CD and FSSAS.SELF_TEST_DATES.TEST_TYPE_CD=SELF_VALID.TEST_TYPE_CD

Join36: SELF_VALID.TEST_TYPE_CD=SELF_TEST_TYPE.TEST_TYPE_CD

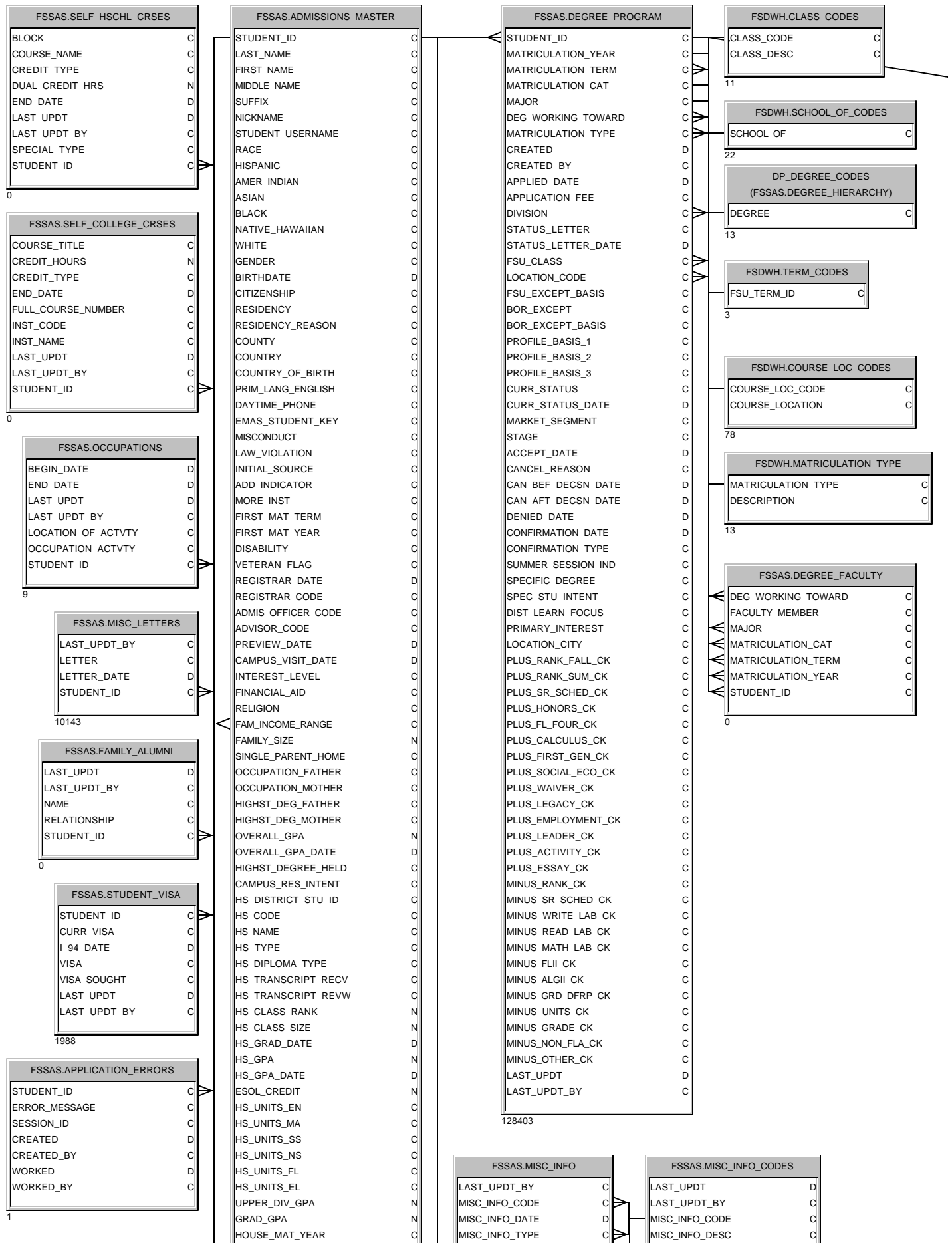
Join37: SELF_SUBJECT.SUBJECT_TEST_CD=SELF_VALID.SUBJECT_TEST_CD

Join38: FSSAS.ADMISSIONS_MASTER.STUDENT_ID=FSSAS.ACTIVITIES.STUDENT_ID

Join39: FSSAS.ACTIVITIES.ACTIVITY_TYPE=FSSAS.VALID_ACTIVITIES.ACTIVITY_TYPE

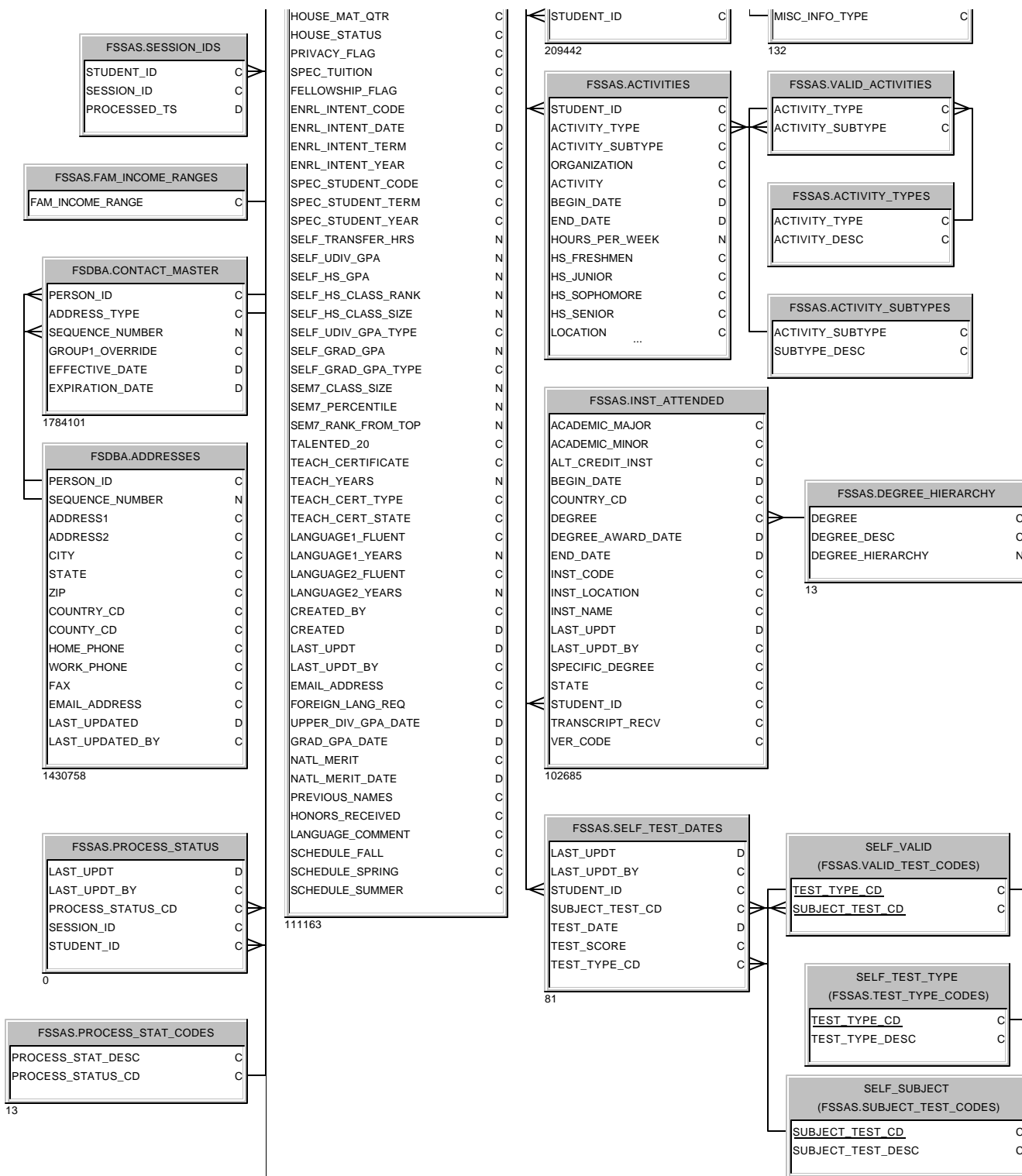
Join40: FSSAS.VALID_ACTIVITIES.ACTIVITY_TYPE=FSSAS.ACTIVITY_TYPES.ACTIVITY_TYPE

Join41: FSSAS.ACTIVITY_SUBTYPES.ACTIVITY_SUBTYPE=FSSAS.VALID_ACTIVITIES.ACTIVITY_SUBTYPE



FSDWH.DATA_SHARE	
PARTITION_NUMBER	C
YEAR	C
TERM	C
SSN	C
NAME	C
LOWCASE_FULL_NAME	C
LOWCASE_LAST_NAME	C
LOWCASE_FIRST_NAME	C
LOWCASE_MIDD_NAME	C
LOWCASE_NAME_SUFIX	C
CURR_CLASS	C
CURR_CLASS_DESC	C
CURR_DIV	C
CURR_DIV_DESC	C
CURR_MAJOR	C
CURR_MAJOR_DESC	C
SECOND_MAJOR	C
SECOND_MAJOR_DESC	C
FSU_CURRENT_LOAD	N
TRANSFER_HOURS	N
TOTAL_ATT_HOURS	N
TOTAL_DEGREE_HOURS	N
FSU_ATT_HOURS	N
FSU_CUMM_GPA	N
TERM_GPA	N
TRANSFER_GPA	N
HIGH_SCHOOL_GPA	N
HS_GRAD_MONTH	C
HS_GRAD_YEAR	C
HIGHST_DEGREE_HELD	C
HIGHST_DEGREE_MNTH	C
HIGHST_DEGREE_YEAR	C
DOCTORAL_CANDIDATE	C
LAST_YEAR_ENR	C
LAST_TERM_ENR	C
CURR_TYPE_STUDENT	C
RACE	C
RACE_DESC	C
GENDER	C
RESIDENCY	C
VISA	C
PRIVACY_FLAG	C
MATRICULATION_YEAR	C
MATRICULATION_TERM	C
MATRICULATION_TYPE	C
LOCATION_CODE	C
COUNTRY	C
COUNTRY_DESC	C
STATE	C
COUNTY	C
BIRTHDATE	D
WITHDRAWAL_CODE	C
WITHDRAWAL_DATE	C
PROBATION_CODE	C
DEGREE_SOUGHT	C
SPEC_TUITION	C
PREV_INSTITUTION	C
CNDG_GRAD_TERM	C
CNDG_GRAD_YEAR	C
CNDG_DEGREE_TYPE	C
CNDG_GRAD_STATUS	C
SDB_EXCEPTION_CODE	C
VETERAN_FLAG1	C
VETERAN_FLAG2	C
NAT_MERIT_STATUS	C
NAT_MERIT_SOURCE	C
NAT_MERIT_TERM	C
NAT_MERIT_YEAR	C
SPEC_PGM_1	C
SPEC_PGM_2	C
SPEC_PGM_3	C
SPEC_PGM_4	C
SPEC_PGM_5	C
ADVISOR_CODE	C
IB_CREDIT	C
PERM_STREET	C





PERM_CITY	C
PERM_STATE	C
PERM_ZIP	C
PERM_PHONE	C
LOCAL_STREET	C
LOCAL_CITY	C
LOCAL_STATE	C
LOCAL_ZIP	C
LOCAL_PHONE	C
ADMS_INTENT_YEAR	C
ADMS_INTENT_TERM	C
ADMS_INTENT_CODE	C
ADMS_SPEC_CODE1	C
ADMS_MAJOR1	C
ADMS_APP_YEAR1	C
ADMS_APP_MONTH1	C
ADMS_APP_DAY1	C
ADMS_STATUS1	C
ADMS_SPEC_CODE2	C
ADMS_MAJOR2	C
ADMS_APP_YEAR2...	C

698657

