

Universe Parameters**Definition**

Name: Admissions & Orientation
 Description: this universe links orientation to admissions universe
 Connection: DB2 Secured

General information

Created: 8/29/2000 by FSIS69
 Modified: 3/18/2002 by FSIS69
 Comments:
 Statistics: 37 Classes
 637 Objects
 36 Tables
 1 Aliases
 37 Joins
 0 Contexts
 0 Hierarchies
 3 Conditions

Strategies

Join strategy: Edit Manually (none)
 Table strategy: (Built-in) Standard
 Object strategy: (Built-in) Standard Renaming

Controls

Limit size of result set to: 250000 rows
 Limit size of long text objects to: 1000 characters
 Limit execution time to: 10 minutes
 Warn if cost estimate exceeds: unchecked

SQL parameters

Query
 Allow use of subqueries: yes
 Allow use of union, intersect and minus operators: yes
 Allow complex conditions in Query Panel: yes
 Cartesian products: prevent
 Multiple paths
 Generate several SQL statements for each context: yes
 Generate several SQL statements for each measure: yes
 Allow selection of multiple contexts: no

Links

Orientation
 Academic Test Scores

Join List

Join0: FSSAS.INST_ATTENDED.DEGREE=FSSAS.DEGREE_HIERARCHY.DEGREE
 Join1: FSSAS.VALID_TEST_CODES.SUBJECT_TEST_CD=FSSAS.SUBJECT_TEST_CODES.SU

BJECT_TEST_CD

Join2: FSSAS.VALID_TEST_CODES.TEST_TYPE_CD=FSSAS.TEST_TYPE_CODES.TEST_TYP
E_CD

Join3: FSSAS.DEGREE_PROGRAM.STUDENT_ID=FSSAS.ADMISSIONS_MASTER.STUDENT_ID

Join4: FSSAS.MISC_LETTERS.STUDENT_ID=FSSAS.ADMISSIONS_MASTER.STUDENT_ID

Join5: FSSAS.FAMILY_ALUMNI.STUDENT_ID=FSSAS.ADMISSIONS_MASTER.STUDENT_ID

Join6: FSSAS.STUDENT_VISA.STUDENT_ID=FSSAS.ADMISSIONS_MASTER.STUDENT_ID

Join7: FSSAS.APPLICATION_ERRORS.STUDENT_ID=FSSAS.ADMISSIONS_MASTER.STUDENT
_ID

Join8: FSSAS.ADMISSIONS_MASTER.STUDENT_ID=FSSAS.MISC_INFO.STUDENT_ID

Join9: FSSAS.MISC_INFO.MISC_INFO_CODE=FSSAS.MISC_INFO_CODES.MISC_INFO_CODE a
nd FSSAS.MISC_INFO.MISC_INFO_TYPE=FSSAS.MISC_INFO_CODES.MISC_INFO_TYPE

Join10: FSSAS.ADMISSIONS_MASTER.STUDENT_ID=FSSAS.INST_ATTENDED.STUDENT_ID

Join11: FSSAS.ADMISSIONS_MASTER.STUDENT_ID=FSSAS.SELF_TEST_DATES.STUDENT_ID

Join12: FSSAS.ADMISSIONS_MASTER.STUDENT_ID=FSSAS.OCCUPATIONS.STUDENT_ID

Join13: FSSAS.ADMISSIONS_MASTER.STUDENT_ID=FSSAS.SELF_COLLEGE_CRSES.STUDEN
T_ID

Join14: FSSAS.ADMISSIONS_MASTER.STUDENT_ID=FSSAS.SELF_HSCHL_CRSES.STUDENT_ID

Join15: FSSAS.DEGREE_PROGRAM.DEG_WORKING_TOWARD=FSSAS.DEGREE_FACULTY.DE
G_WORKING_TOWARD and FSSAS.DEGREE_PROGRAM.MAJOR=FSSAS.DEGREE_FAC
ULTY.MAJOR and FSSAS.DEGREE_PROGRAM.MATRICULATION_CAT=FSSAS.DEGREE_
FACULTY.MATRICULATION_CAT and FSSAS.DEGREE_PROGRAM.MATRICULATION_TER
M=FSSAS.DEGREE_FACULTY.MATRICULATION_TERM and FSSAS.DEGREE_PROGRAM
.MATRICULATION_YEAR=FSSAS.DEGREE_FACULTY.MATRICULATION_YEAR and FSSA
S.DEGREE_PROGRAM.STUDENT_ID=FSSAS.DEGREE_FACULTY.STUDENT_ID

Join16: FSSAS.DEGREE_PROGRAM.MATRICULATION_TERM=FSDWH.TERM_CODES.FSU_TER
M_ID

Join17: FSSAS.DEGREE_PROGRAM.STUDENT_ID=FSDWH.DATA_SHARE.SSN

Join18: FSSAS.DEGREE_PROGRAM.DEG_WORKING_TOWARD=DP_DEGREE_CODES.DEGREE

Join19: FSSAS.DEGREE_PROGRAM.DIVISION=FSDWH.SCHOOL_OF_CODES.SCHOOL_OF

Join20: FSSAS.DEGREE_PROGRAM.FSU_CLASS=FSDWH.CLASS_CODES.CLASS_CODE

Join21: FSSAS.DEGREE_PROGRAM.LOCATION_CODE=FSDWH.COURSE_LOC_CODES.COUR
SE_LOC_CODE

Join22: FSSAS.DEGREE_PROGRAM.MATRICULATION_TYPE=FSDWH.MATRICULATION_TYPE.M
 ATRICULATION_TYPE

Join23: FSSAS.ADMISSIONS_MASTER.STUDENT_ID=FSDBA.CONTACT_MASTER.PERSON_ID

Join24: FSDBA.ADDRESSES.PERSON_ID=FSDBA.CONTACT_MASTER.PERSON_ID and FSDBA.
 ADDRESSES.SEQUENCE_NUMBER=FSDBA.CONTACT_MASTER.SEQUENCE_NUMBER

Join25: FSSAS.ACAD_TEST_SCORES.TEST_TYPE_CD=FSSAS.VALID_TEST_CODES.TEST_TY
 PE_CD and FSSAS.ACAD_TEST_SCORES.SUBJECT_TEST_CD=FSSAS.VALID_TEST_C
 ODES.SUBJECT_TEST_CD (Academic Test Scores)

Join26: FSSAS.SUBJECT_TEST_CODES.SUBJECT_TEST_CD=FSSAS.VALID_TEST_CODES.SU
 BJECT_TEST_CD (Academic Test Scores)

Join27: FSSAS.VALID_TEST_CODES.TEST_TYPE_CD=FSSAS.TEST_TYPE_CODES.TEST_TYP
 E_CD (Academic Test Scores)

Join28: FSSAS.MCAT_WRITING_SCORE.STUDENT_ID=FSSAS.ACAD_TEST_SCORES.STUDENT
 _ID and FSSAS.MCAT_WRITING_SCORE.TEST_DATE=FSSAS.ACAD_TEST_SCORES.TE
 ST_DATE (Academic Test Scores)

Join29: FSSAS.TEST_EXEMPT.TEST_TYPE_CD=FSSAS.ACAD_TEST_SCORES.TEST_TYPE_C
 D and FSSAS.TEST_EXEMPT.SUBJECT_TEST_CD=FSSAS.ACAD_TEST_SCORES.SUBJ
 ECT_TEST_CD (Academic Test Scores)

Join30: FSSAS.ACAD_TEST_SCORES.STUDENT_ID=FSSAS.ADMISSIONS_MASTER.STUDENT_ID

Join31: FSDSA.ORI_APPLICATIONS.ORI_YEAR=FSDSA.ORI_SECTION_MASTER.ORI_YEAR and F
 SDSA.ORI_APPLICATIONS.ORI_TERM=FSDSA.ORI_SECTION_MASTER.ORI_TERM and F
 SDSA.ORI_APPLICATIONS.ORI_SESSION=FSDSA.ORI_SECTION_MASTER.ORI_SESSIO
 N and FSDSA.ORI_APPLICATIONS.ORI_SECTION=FSDSA.ORI_SECTION_MASTER.ORI_S
 ECTION and FSDSA.ORI_APPLICATIONS.ORI_LOCATION=FSDSA.ORI_SECTION_MASTE
 R.ORI_LOCATION (Orientation)

Join32: FSDSA.ORI_FAMILY.ORI_YEAR=FSDSA.ORI_APPLICATIONS.ORI_YEAR and FSDSA.ORI_
 FAMILY.ORI_TERM=FSDSA.ORI_APPLICATIONS.ORI_TERM and FSDSA.ORI_FAMILY.ORI_
 SESSION=FSDSA.ORI_APPLICATIONS.ORI_SESSION and FSDSA.ORI_FAMILY.ORI_SECT
 ION=FSDSA.ORI_APPLICATIONS.ORI_SECTION and FSDSA.ORI_FAMILY.ORI_LOCATION=
 FSDSA.ORI_APPLICATIONS.ORI_LOCATION and FSDSA.ORI_FAMILY.STUDENT_ID=FSD
 SA.ORI_APPLICATIONS.STUDENT_ID (Orientation)

Join33: FSDSA.ORI_DEMOGRAPHICS.STUDENT_ID=FSDSA.ORI_APPLICATIONS.STUDENT_ID (
 Orientation)

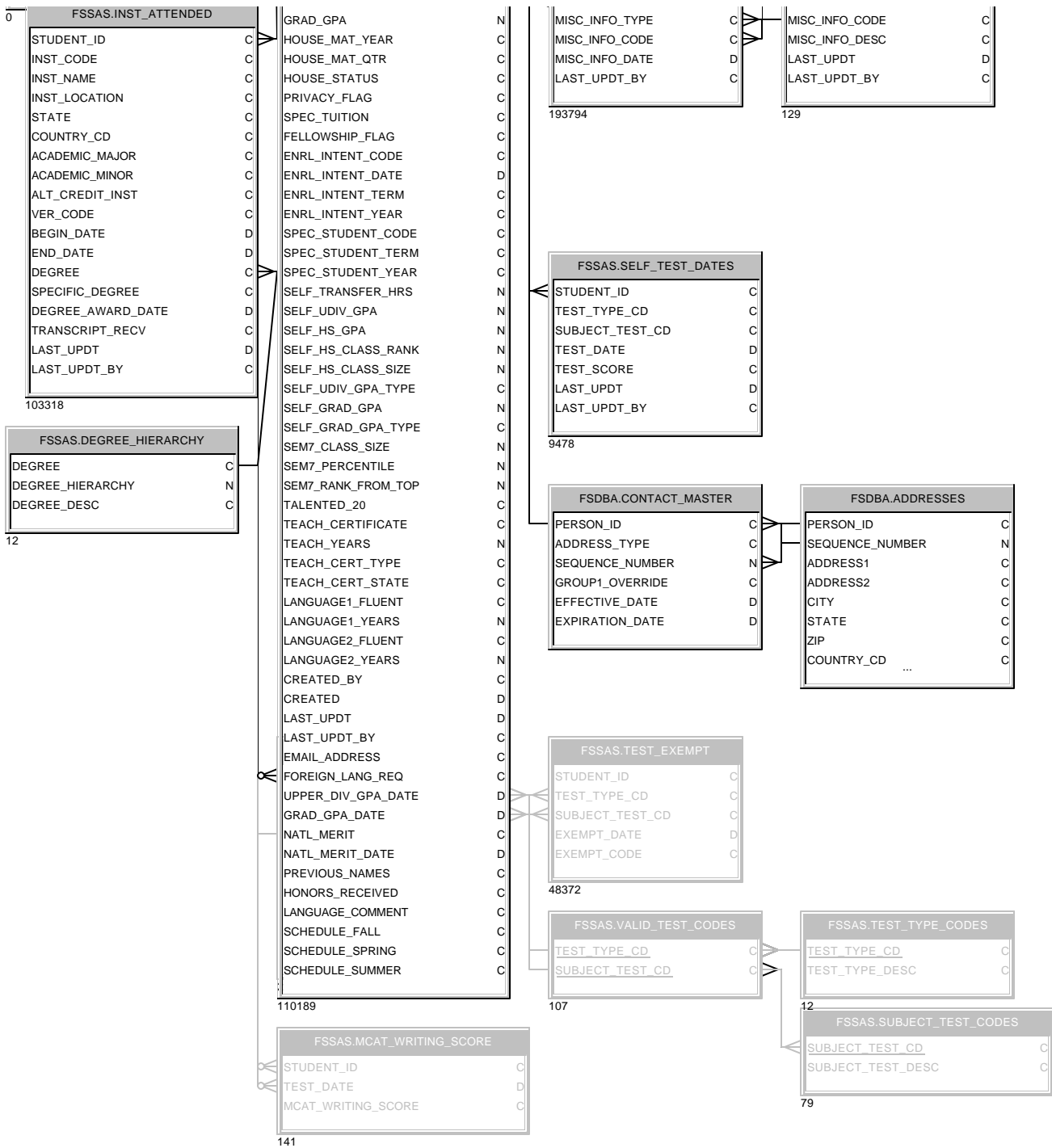
Join34: FSDSA.ORI_APPLICATIONLOG.STUDENT_ID=FSDSA.ORI_APPLICATIONS.STUDENT_ID (
 Orientation)

Join35: FSDSA.ORI_APPLICATIONLOG.STUDENT_ID=FSDSA.ORI_LOG_COMMENTS.STUDENT_I
 D (Orientation)

Join36: FSSAS.ADMISSIONS_MASTER.STUDENT_ID=FSDSA.ORI_APPLICATIONS.STUDENT_ID







IB_CREDIT	C
PERM_STREET	C
PERM_CITY	C
PERM_STATE	C
PERM_ZIP	C
PERM_PHONE	C
LOCAL_STREET	C
LOCAL_CITY	C
LOCAL_STATE	C
LOCAL_ZIP	C
LOCAL_PHONE	C
ADMS_INTENT_YEAR	C
ADMS_INTENT_TERM	C
ADMS_INTENT_CODE	C
ADMS_SPEC_CODE1	C
ADMS_MAJOR1	C
ADMS_APP_YEAR1	C
ADMS_APP_MONTH1	C
ADMS_APP_DAY1	C
ADMS_STATUS1	C
ADMS_SPEC_CODE2	C
ADMS_MAJOR2	C
ADMS_APP_YEAR2	C
...	C

627668

